

# FORCE MAIN PERFORMANCE MONITORING AND BURST ALERTING

WASTEWATER NETWORKS



**Syrinix**  
A Badger Meter® Brand

Today, when many utilities are faced with aging infrastructure and restricted budgets, a burst on a wastewater force main can have significant consequences for both the utility and the environment. And in more remote areas, bursts can go undetected, resulting in substantial pollution events with heavy costs – both financial and environmental. High-resolution data and precision timing can save time and money and minimize environmental impacts.

## PATENTED HARDWARE

<b>Automated burst alerts</b>	Automated burst notifications reduce response times and save money.
<b>External sensor designed to minimize clogging/ ragging</b>	Specifically designed for challenging wastewater environments, data continues to be provided without reduction due to clogging / ragging.
<b>Always-on 128Hz sampling</b>	High-resolution insights allow users to understand asset performance in detail.
<b>High Delivery Pressure Alerts</b>	Provides early notification of blocked wastewater pipelines.
<b>Low Delivery Pressure Alerts</b>	Provides early indication of worn / failing non-return valves and failing pumps.
<b>High Static Head Alerts</b>	Indicates possible trapped air impacting performance / efficiency.
<b>Low Static Head Alerts</b>	Provides early indication of failing non-return valve.



## PIPEMINDER ONE

### EXTERNAL SENSOR

# PROPRIETARY PLATFORM

## Powerful highly intuitive "RADAR" user interface

See what you want and need in detail without lengthy training / roll-out programs.

## Third party data import and display

Easily import third-party data into RADAR for a "single screen view" including SCADA pump / valve status changes.

## Configurable automated filtering and alerts

Avoid data-overload and focus easily on what you need to with customizable alerts to highlight when important changes occur.

## Secure cloud-based platform

See what you need to see from wherever you need to see it, auto-scaled for your device.

## Customer API and simple data integration / export tools

Easily integrate your network data with simple to use tools and APIs for importing and exporting data sets and alarms.

## Advanced GIS and Google Maps integration

Including satellite views and GIS overlay options to see your network as it actually is.







## DATA-LED INSIGHT ON YOUR NETWORK

"The PIPEMINDER monitor and RADAR platform were very user friendly and easy to install, maintain and evaluate. Syrinix support was excellent."



**Dianne Mathews, P.E.**  
Senior Engineer

Western Lake Superior Sanitary District (WLSSD)

For the Operator

-  **Save time**
-  **Save money**
-  **Focus on what you want / need to see**
-  **Respond faster to events**

For the Utility

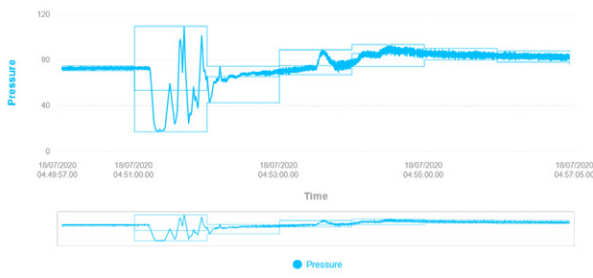
-  **Provide great service**
-  **Protect the environment**

## CASE STUDY

# Western Lake Superior Sanitary District

**WLSSD** provides wastewater treatment for 17 communities and 3 large industrial facilities in a 530 square mile region, treating about 14 billion gallons of municipal and industrial sewage annually.

In 2019, **WLSSD** hired a consultant to evaluate their force mains to identify vulnerabilities in the network; recommendations ranged from \$185,000 to a \$1 million in capital improvements! To verify the model results, **WLSSD** turned to Syrinix to provide insights based on high-resolution data provided by Syrinix's **PIPEMINDER** monitoring solutions. Syrinix' analysis verified some of the model results while also identifying specific problem areas, including identifying transient events due to power outages. The **PIPEMINDER** captured four significant transient events when the pumps shut down due to a power failure. Transients were documented and showed significant additional pressure on the pipes that could

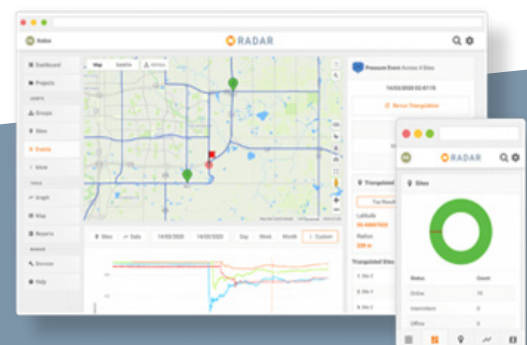


cause a failure if they continued. This data enabled the team to highlight the importance of determining the cause of the outages and to work with the utility to identify the cause and mitigate the problem.

Altogether, data-led insights provided by Syrinix technology helped **WLSSD** make informed decisions,

save money, and improve system availability.

Read the article in *Water and Wastes Digest* or watch the interview with Dianne Mathews.



## About Syrinix

Syrinix is an award-winning global market leader in developing intelligent pipeline monitoring technologies, including the PIPEMINDER-ONE series for water and wastewater monitoring, the RADAR cloud-based network analysis platform, and Syrinix Intelligence analysis and consultancy services. Syrinix helps cost-conscious utilities move network management from reactive to proactive, detecting and mitigating network issues before they become failures.

[www.syrinix.com](http://www.syrinix.com)